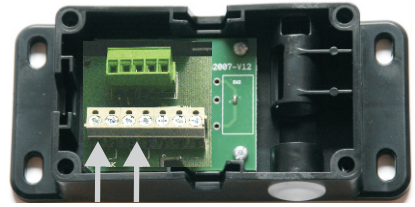


# Anschluss Schlaffseilschalter/Schlupftürkontakt an Tordose oder Tordose mit SBA-Sensor

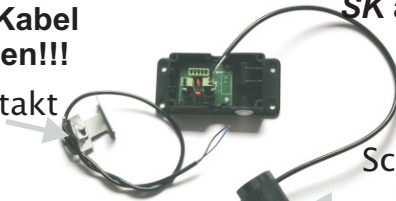


**Brücke entfernen und  
2 adriges Kabel  
anschießen!!!**

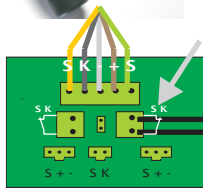


**2 adrige Kabel an Klemmen  
SK anschließen!!!**

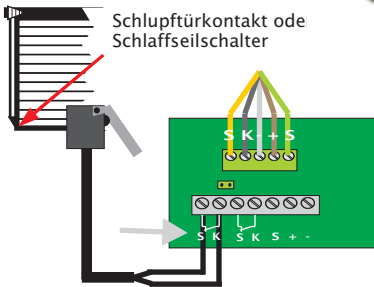
Schlupftürkontakt



Schlaffseilschalter



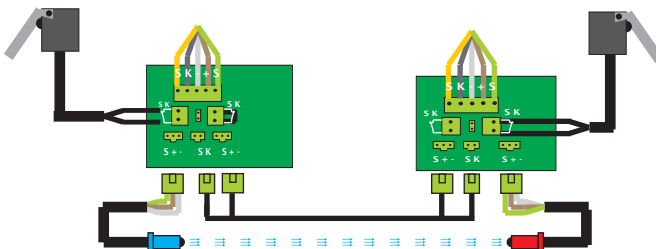
Schlupftür oder  
Schlaffseilschalter



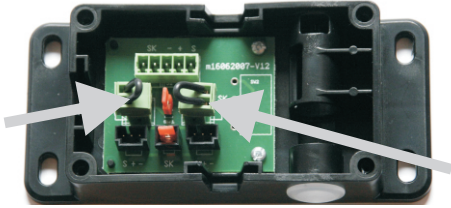
Anschluss an Tor-Dose/SBA-Sensor  
mit Schraubklemmen an SK kontakt

Anschluss an Tor-Dose/SBA-Sensor  
mit Steckklemmen an SK kontakt

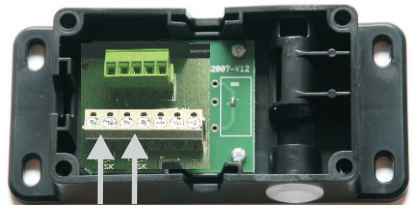
**Anschluss mit 2 Dosen!  
Verbindung mit 5-adrigem Kabel mit 2 Steckern (2/3 Pol.)!**



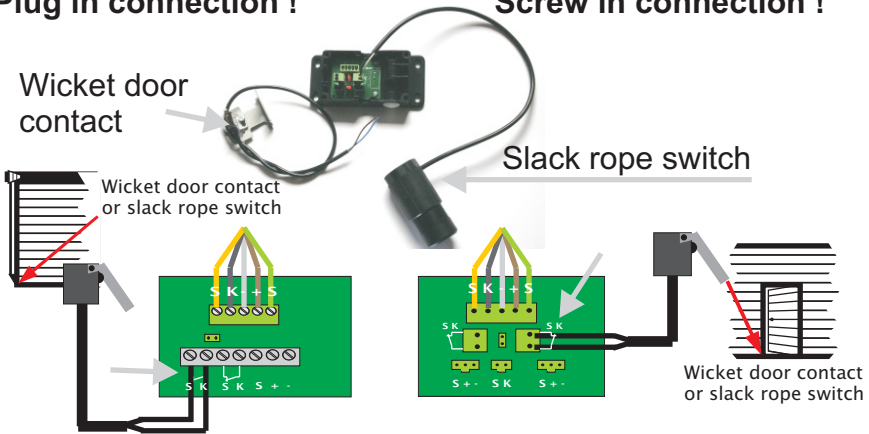
# Connection of slack-rope switch and wicket door contact at the Junction Box or Junction Box with SBA-Sensor !



**Remove bridge and connect 2 wired cables!  
Plug in connection !**



**Remove bridge and connect 2 wired cables!  
Screw in connection !**



Connection at Junction Box/SBA-Sensor with screw in connection at **SK** contact

Connection at Junction Box/SBA-Sensor with plug in connection at **SK** contact

## Connection with 2 Junction Boxes! Connected via 5-wire cable with 2 plugs (2/3 Pole)!

